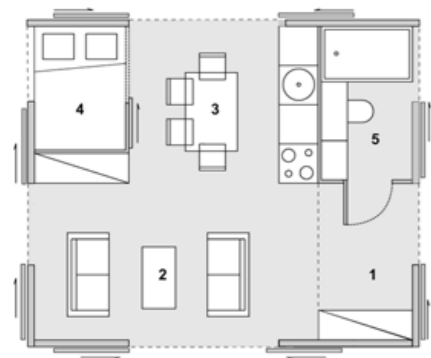


Trusses, decks and units are delivered by trucks and placed onto the roofs with a mobile crane

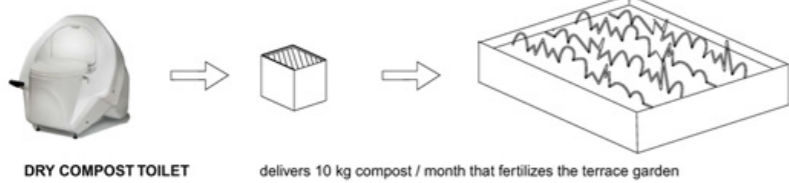


**TYPLOGIES** of units with half climate zones



**UNIT LAY-OUT** of 5.00 x 6.00 m.

1. entry / storage
  2. living with extension onto terrace
  3. kitchen
  4. small bedroom / storage below
  5. sanitary unit / dry compost toilet / open air bath
- all spaces connect to the half climate terrace space through sliding doors



**DRY COMPOST TOILET**

delivers 10 kg compost / month that fertilizes the terrace garden

